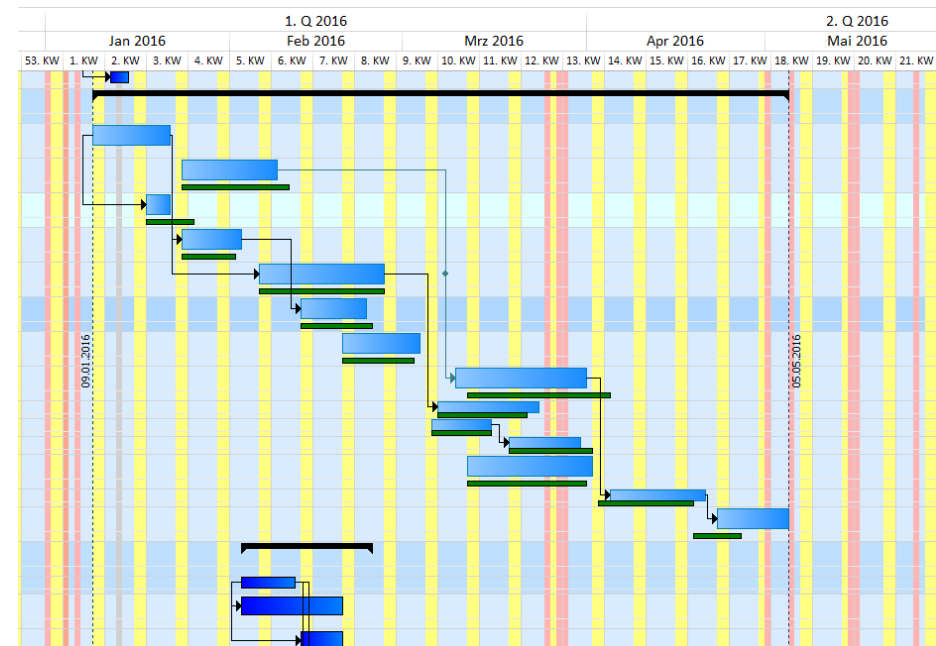


FEATURES

GANTT CHART VIEW

CONNECTIONS

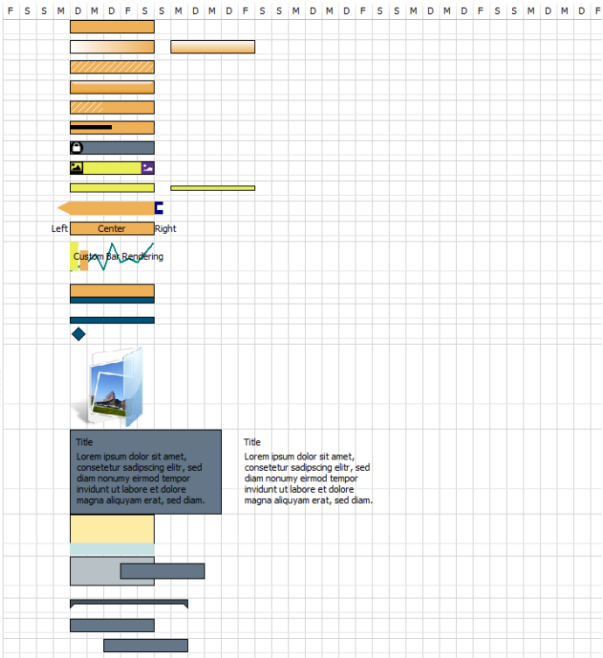
Connections processes together to illustrate relationships between them. Connections provide a number of parameters here. Connections processes are automatically moved in accordance with their link if dates are changed.



Bars / Types

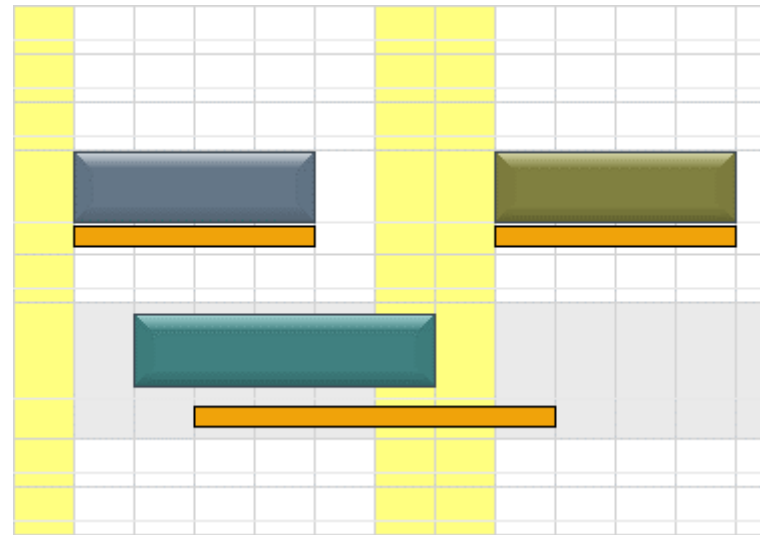
A wide range of bar types is available, e.g. target bars, actual bars, milestones, text bars and collective bars. A process can be split into any number of sub-periods.

Nr	Bar
1	TaskBar DrawStyle = dsSolid
2	TaskBar DrawStyle = dsGradient
3	TaskBar DrawStyle = dsPattern
4	TaskBar DrawStyle = ds3D
5	TaskBar BufferTimeLeft = 2 days
6	TaskBar Progress = 50
7	TaskBar Locked
8	TaskBar Start- and EndGlyph assigned
9	TaskBar different bar heights
10	TaskBar Startshape
11	TaskBar TextLeft
12	TaskBar Custom Drawing
13	TaskBar and ProgressBar
14	Progress Bar
15	Milestone Bar
16	Image Bar
17	Text Bar
18	ShadowTaskBar and ShadowProgressBar
19	ShadowTaskBar and TaskBar
20	Summary Bar
21	
22	



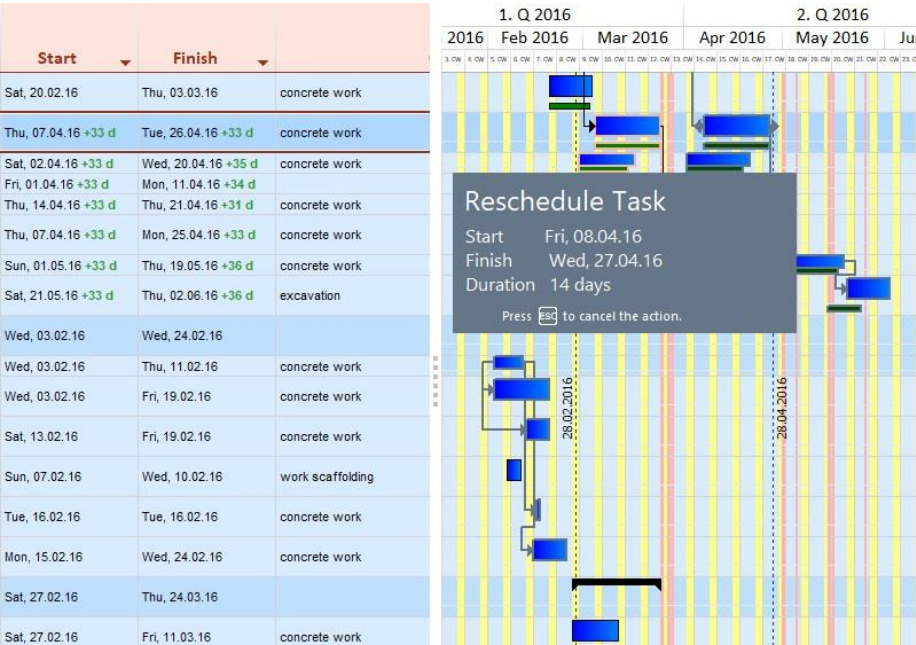
Target-Actual

Simultaneous displaying of target and actual bars within a process enables project delays to be immediately identified.



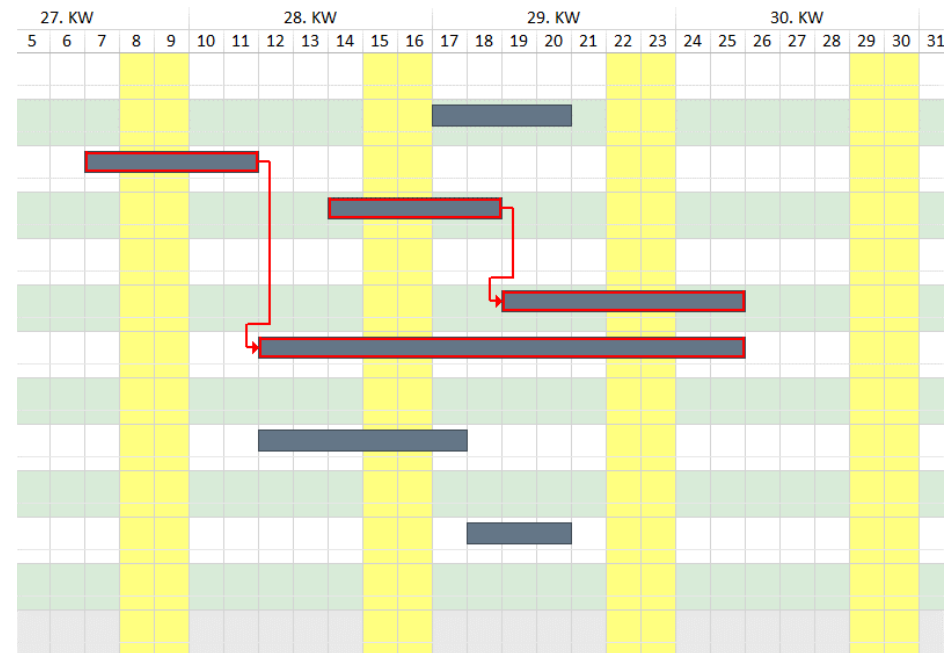
Live Preview

Changes to a critical process often have far-reaching effects on other linked processes. The live preview enables these effects on the entire plan to be identified while a process is still being deferred.



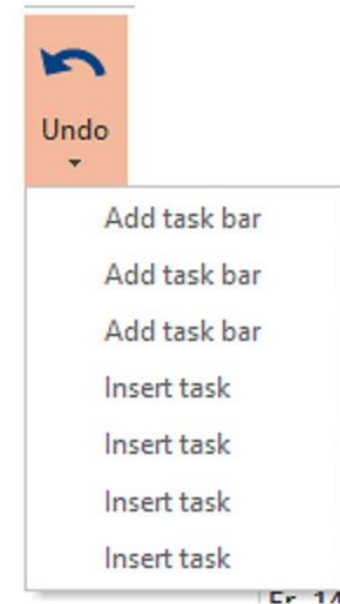
Critical Path

The critical path contains all processes which directly affect the project end date. GANTT CONTROL 3.0 VCL helps calculate and display the critical path. All relevant data, such as earliest start time, earliest end time, latest start time or latest end time, is calculated for each process.



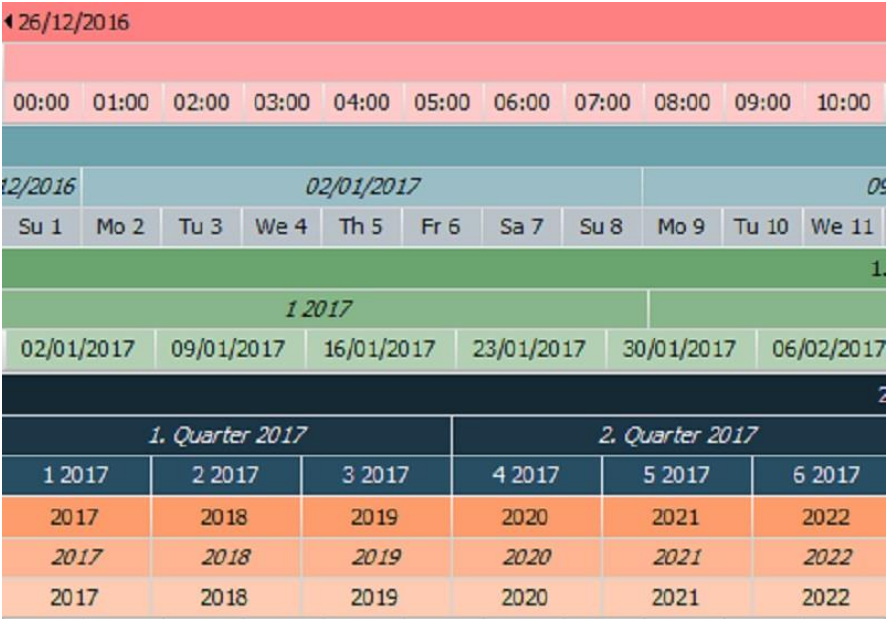
Multi-Level-Undo

The integrated Multi-Level Undo enables the component to directly revert to an earlier stage in the processing hierarchy.



Time scale







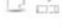


The zoomable time scale can be set to hours, days, weeks, months and years, with a lot of free scope regarding labelling.



FLEXIBLE TABLE

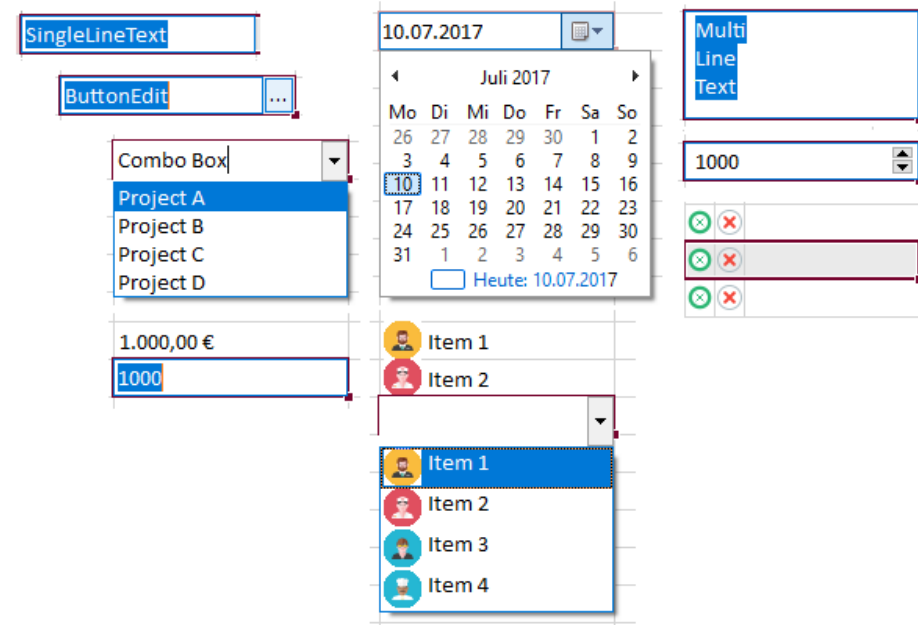
Cell based

Within the table, you can format areas of cells and individual cells independently from one another, just as you are used to doing with your table calculation. For example, you can highlight cells containing important information.

Nr	Info	Name	Start	Finish
1				
2		Task 1	Mon, 10.07.17	Mon, 10.07.17
3		Task 2	Thu, 13.07.17	Sun, 16.07.17
4		Task 3	Sat, 15.07.17	Tue, 18.07.17
5		Task 4	Wed, 12.07.17	Mon, 17.07.17
6		Task 5		
7				
8				
9				

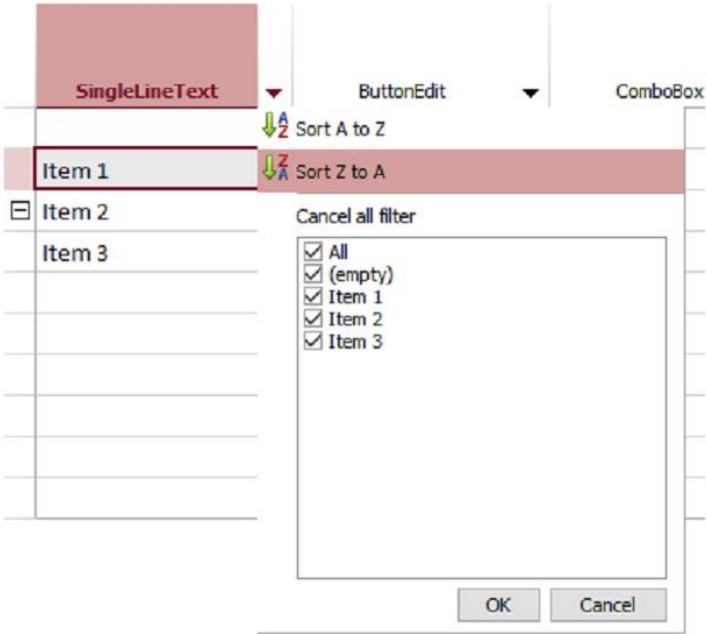
Editors for various data types

There are various editors for processing and entering data, such as *single-row text*, *multi-row text*, *date*, *time*, *selection list*, *selection list with picture*, *currency*, *numerical values*, and *text with button*. This enables you to adjust the table to your requirements.



Column menu

The column menu for each column enables the content to be sorted or filtered.



Indicator Column

Indicator Columns show individual icons which symbolise a row's specific states or perform further actions.

Indicator ▼

⊗

⊗

⊗

⊗

⊗

⊗

⊗

⊗

⊗

⊗

⊗

⊗

⊗

⊗

⊗

⊗

⊗

⊗

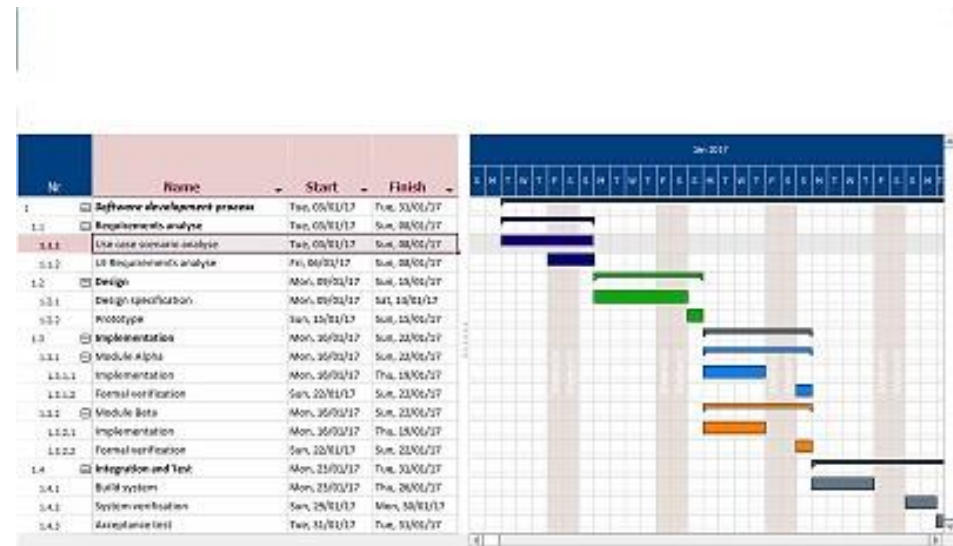
Caption 1

The hint text describes the indicator item

7	<div><div>➡</div><div>📄</div><div>🔄</div></div>	
8	<div><div>🟡</div><div>📄</div><div>🔄</div></div>	
9	<div><div>📄</div><div>🔄</div></div>	

Hierarchical tree view

The table helps processes be subdivided in a hierarchical manner. Use these functions to group data and show it more clearly.

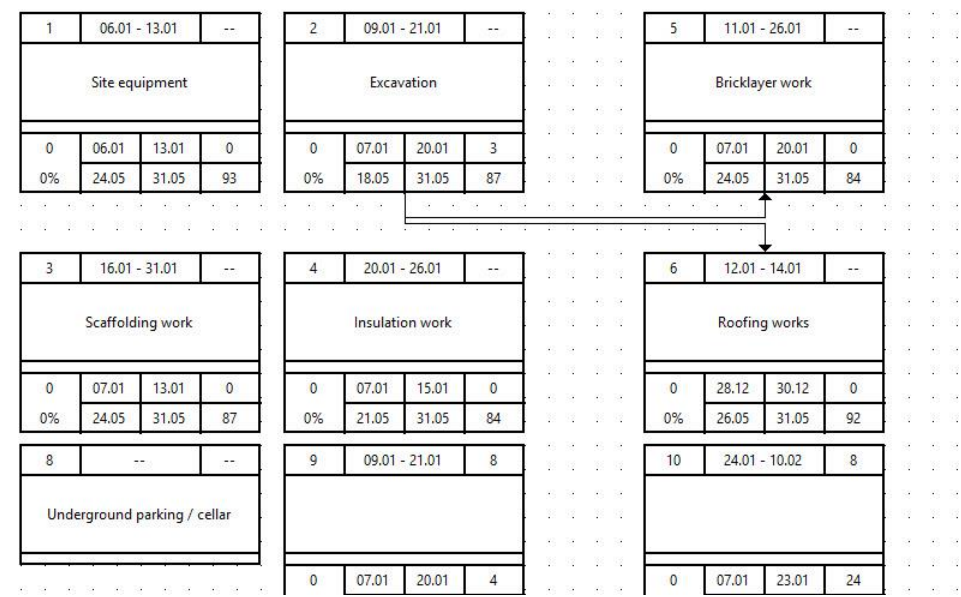


PERT CHART

PERT CHART

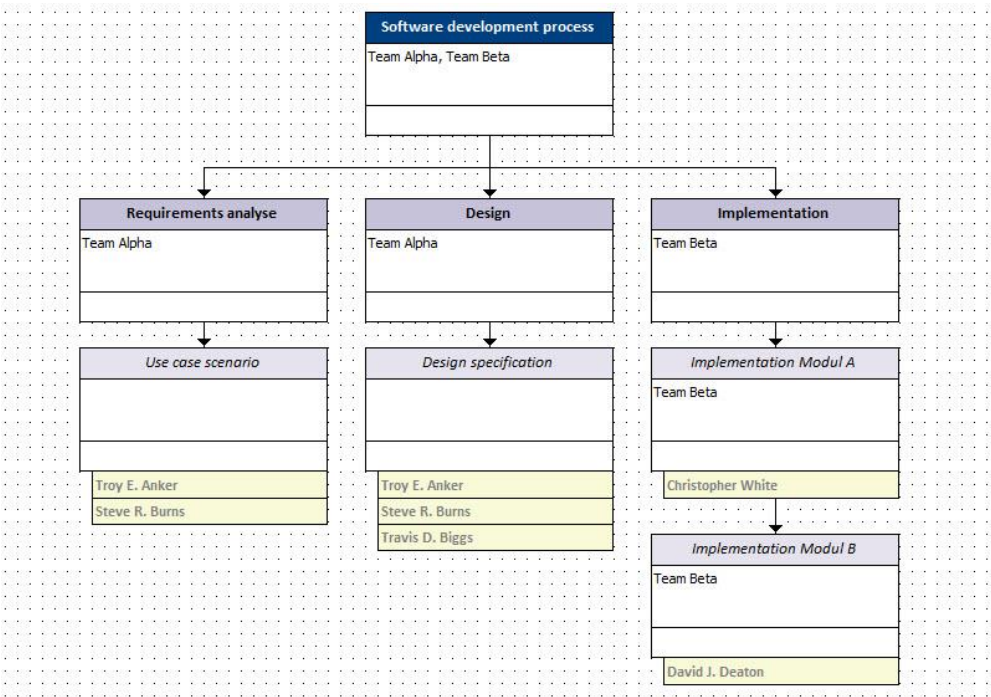
The pert chart shows the duration of a process, as well as its earliest start time, earliest end time, latest end time and latest start time.

PERT CHART
Pert chart view



STRUCTURE CHART

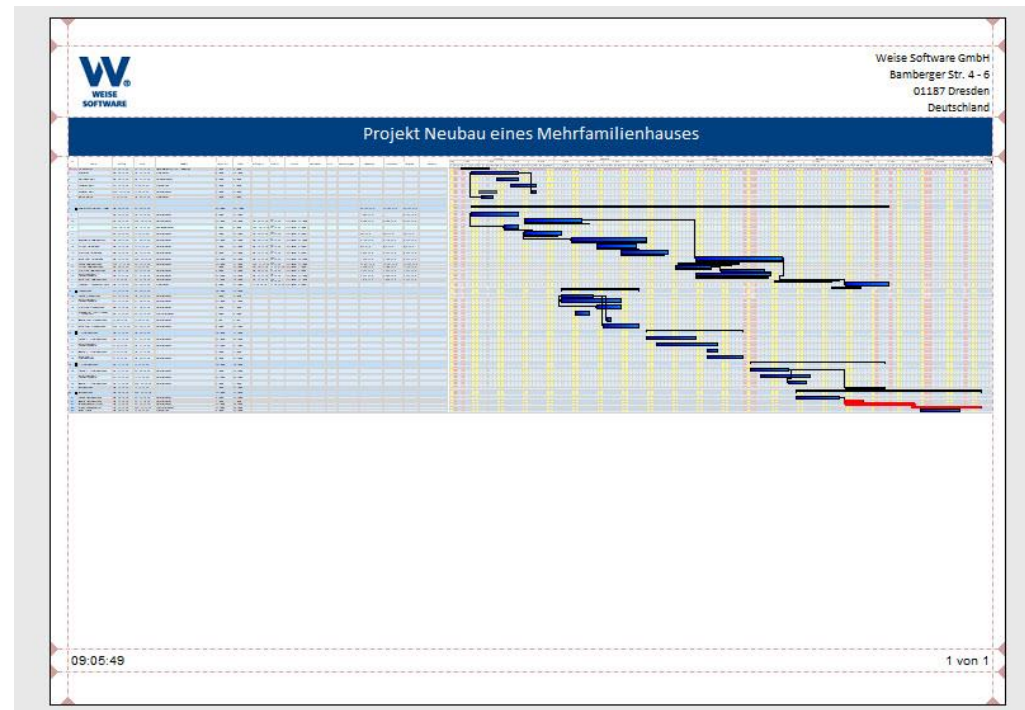
Structural plan elements may be used to model a project's existing structures. Each element of a structural plan is divided into three sectors. A list of additional entries (e.g. ancillary managers, as shown here) can also be displayed.



PRINT PREVIEW

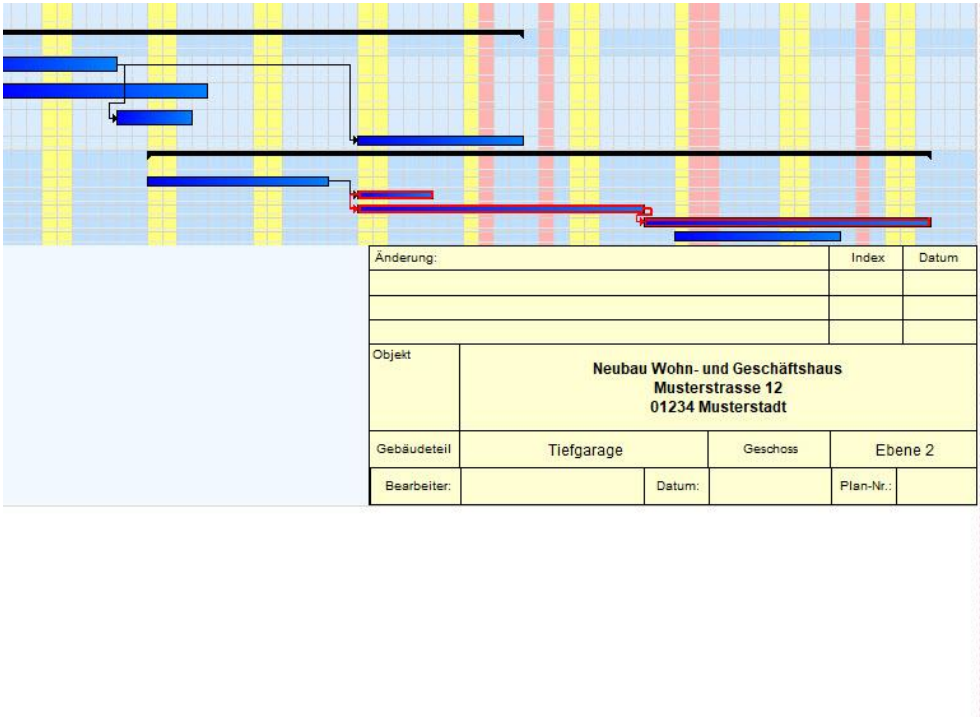
Header and footer

The header and footer can be easily designed in the print preview. Auto text boxes, such as page number or date, can be inserted into the header and footer.



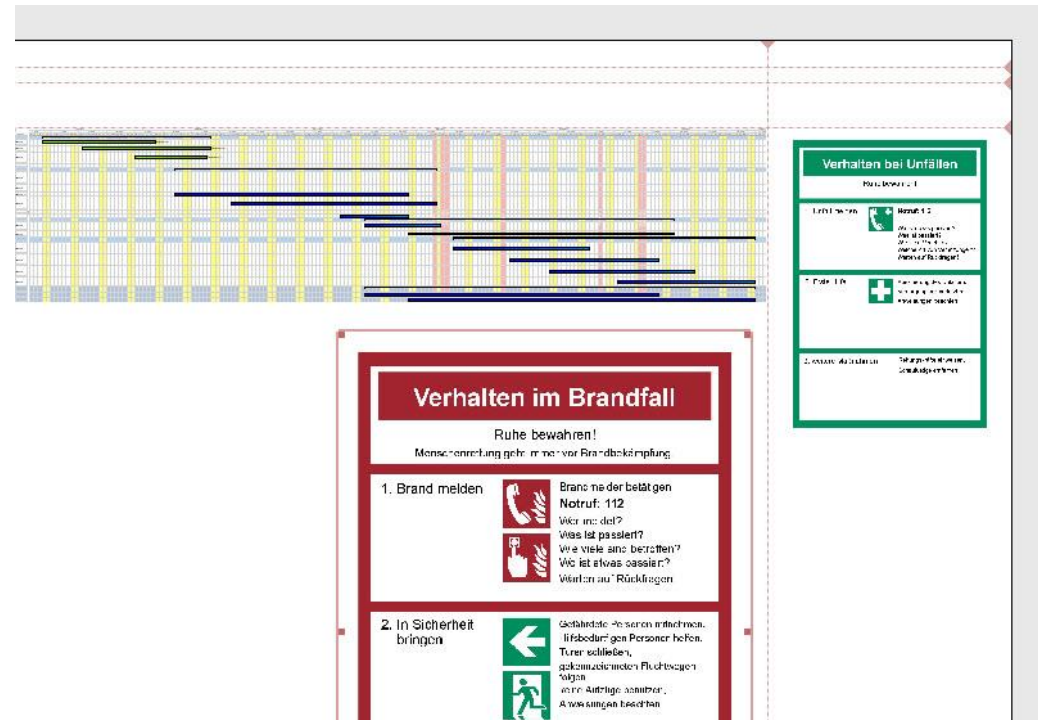
Legend

GANTT CONTROL 3.0 enables you to create special legends for the time period, and add these to the print-out.



Plan images

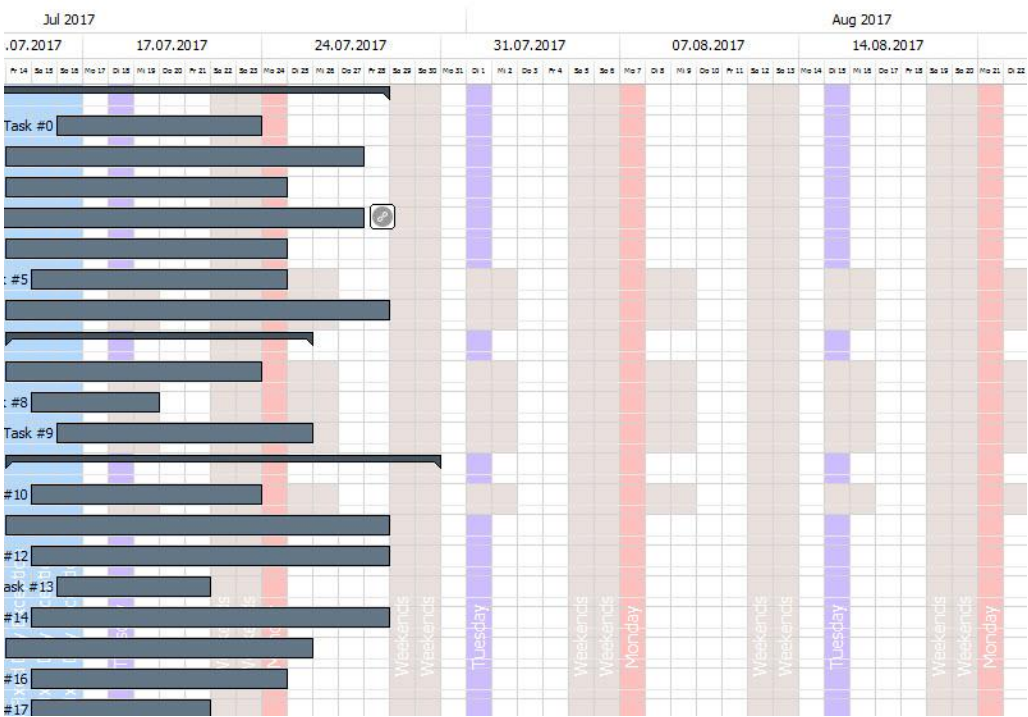
Add freely positionable and scalable images and EXCEL documents to the Gantt chart print-out.



CALENDAR MODUL

Row Calendar

Each row can be assigned its own separate calendar. Exceptions and times can be defined in hours, weeks, days and months.



Complex patterns of recurring non-working times are easily defined.

