

# Gantt Control

## Software component for project management

Developing a software solution that is designed for the coordination of activities and tasks for project management, scheduling and task

processing.

The usage of a gantt chart, as it is well-known from common software applications like Microsoft Project has been proved as a proper solution for scheduling and planning activities or tasks.

The VVW GmbH offers software developers the possibility to use the software component **GANTT CONTROL** in their own software development projects to extend the functionality for task scheduling.

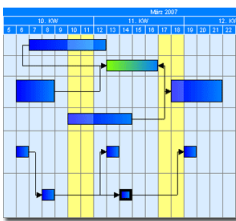
For the integrated development environment Borland (CodeGear) Delphi, the component is available as the **GANTT**

**CONTROL VCL** edition. The **GANTT CONTROL ActiveX** edition can be used as an ActiveX Plug-in component in all development environments that provides the usage of ActiveX Plug-ins.

In addition to the gantt chart the **GANTT CONTROL** component provides further capabilities:

- a pert chart,
- a hierarchical tree grid,
- a flexible printing preview.

A gantt chart



management, production scheduling and employee scheduling often requires a powerful software component for visualization and

### Overview - gantt chart

The gantt chart is responsible for visualizing the scheduling of tasks and displaying them on a time scale. For this, two different bar types are available.

Task bars represents planned tasks and progress bars represents actual tasks. Existing tasks can be grouped and structured into

summary bars, which prove expanding and collapsing them.

To include project specific events or additional information in the gantt chart, its possible to add milestones, text fields or images. To transform complex behavior of activities among each other into the more abstract view

model of a gantt chart, bars can be connected to each other. If two or more bars are connected by using a "fix" connection, changes made to one bar are delegated to all referring connected bars.

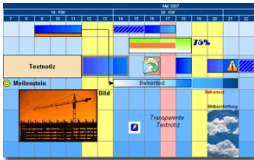
### Overview:

The software component **GANTT CONTROL** enables software developers to integrate gantt charts and pert charts in their software development projects.

### Index

Parametrisation	2
Time scale	2
Table view	2
Pert chart	3
Printing preview	4
Centralized data management	5
Licensing	6

Specify the layout and the style of the gantt chart



### Parametrisation

There is a vast amount of possibilities for specifying the style and the content of the gantt chart. Among bars and connections, objects like milestones, text notes and images can be added to the gantt chart. Properties like buffer time, bar height, frame, internal bar progress, rowheight, rowcolor, start and end pictogram are adjustable.

date of the project when delayed is calculated and displayed within the gantt chart.

All elements of the gantt chart can be created and moved user friendly with the help of the mouse.

The critical path, as the connection of activities that would reschedule the finish

„Define your own project specific deadlines and time periods...“

### Time scale

For displaying the tasks in the gantt chart the time scale supports the four different view modes “day-view”, “week-view”, “month-view” and “year-view”. For each view mode the desired labelling format can be chosen.

periods such as the project start, the project begin or global time periods such as holidays or vacations within the integrated calendar module.

immediately.

Define your own project specific deadlines and time

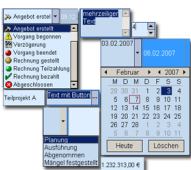
Some recurring time periods, such as weekends are already predefined and can be added to the calendar module

### Table view

For each gantt chart and pert chart an editable table view is available, storing any additional necessary information needed. The table view supports hierarchical structuring and single branches can be collapsed or expanded.

line text field, multi line text field, spin edit field, date field, combo box, image combo box, currency edit field and a text field linked to a button). An ascending and descending sort order can be applied by clicking the referring column header.

formatting can be applied to a single row. As each row can have a unique layout single rows can easily be highlighted.



Different cell editors

For displaying and editing information, different cell editors are available (single

Furthermore a lot of possibilities for text

**Pert chart**

Within the pert chart, as a part of the GANTT CONTROL software component, the duration of a task bar as well as the earliest start date, the earliest end date, the latest start date and the latest end date are represented as pert bars.

To model existing structures of a project, pert bars can be used too. Each pert bar is divided into three segments and an optional list displaying

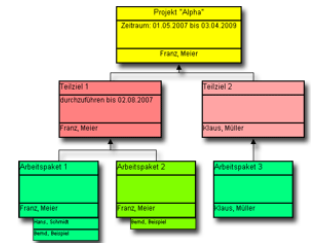
additional items. *Tip:* You can use the pert chart for structuring and segmenting projects. Higher level project aims, sub ordinate project aims and work packages can be visualized and modelled as elements of the pert chart. For example pert bars that represent work packages can be extended by a list of responsible employees.

For modelling relations between aims and working packages the pert chart

supports connecting pert bars with each other.

Tasks of a gantt chart and a pert chart can be assigned to a unique datasource. This offers the advantage that changes made to tasks in a gantt chart are automatically updated within the pert chart.

If the user intends to create new objects, he can easily drag and drop them into the pert chart with the mouse.



**Example of a pert chart.**

**Printing preview**

In the final stage of the workflow process it is often required to present and print out the created chart diagrams. A flexible printing preview that is highly adaptable to the users needs, allows the specification of lots of parameters (zoom, pagination, page title,

background image). Also a legend that is segmented into rows and columns can be attached to a diagram. Each cell can contain text or images. Furthermore the printing preview provides defining a header and footer- row.

**„You can use the pert chart for structuring and segmenting projects.“**

**Centralized data management**

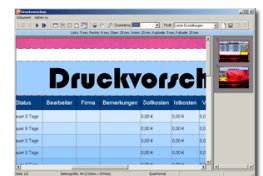
Gantt Control is based upon the model-view-control architecture. This defines the existence of a unique centralized data source. This allows users to connect different gantt- or pert charts to a single datasource, enabling your software application fitting the users need.

all access methods and functions that are necessary to create and edit all existing elements of the gantt chart, the pert chart or the table view.

Additionally the data source implements an undo/redo functionality, which allows the user to undo/redo all changes made to the data.

The data source provides

**Printing preview**





Get in contact:

For further information please visit our web site.

Visit our web site:

<http://www.gantt-component.com>

## Licensing

### Gantt Control VCL Edition

License	without sourcecode	inclusive sourcecode
Single developer license	499 €	1299€
4 developer license	1497€	3293€
8 developer license	2594€	4669€
Enterprise wide license	3486€	5577€

### Gantt Control Active X Edition

License	without sourcecode	inclusive sourcecode
Single developer license	499 €	1299€
4 developer license	1497€	3293€
8 developer license	2594€	4669€
Enterprise wide license	3486€	5577€

Vordruckverlag Weise GmbH  
Bamberger Straße 1  
01187 Dresden  
Germany

Telefon: 03 51- 4 71 94 19  
Fax: 03 51 - 4 71 17 09  
E-Mail:  
[info@vordruckverlag.de](mailto:info@vordruckverlag.de)